



Step-by-Step Guide to Setup Instant Messaging (IM) Workspace Datasheet

Step-by-Step Guide to Setup Instant Messaging Workspace

CONTENTS

Installation

- [System requirements](#)
- [SQL Server setup](#)

Setting up user accounts

- [Authentication mode](#)
- [Account options](#)
- [Import from the Active Directory](#)
- [Create via the Account Wizard](#)
- [Create from IM clients](#)

Managing the IM workspace

- [Organizational Units](#)
- [Messaging Groups](#)
- [News messages](#)

Getting IM client connected

- [Set up a connection to the server](#)
- [Sign up to the IM network](#)

Document Overview

This document contains a step-by-step manual on how to install Bopup Communication Server version 3.x and get IM clients connected. The installation of the server does not require any specific knowledge or skills. It is easy to install the server and get it ready and working just after the installation process.

The first part of this document includes the first steps of installing the software and setting up the SQL server database used by Bopup Communication Server.

The second part describes creating user accounts and includes the instructions on how to import user accounts from the Active Directory (LDAP) catalog, create accounts manually via the Add User Account Wizard or permit users to create their own IM accounts directly from messengers.

The last part of this document helps to create an efficient Instant Messaging system within the Organizational Units structure, messaging groups and a scheduled News messaging system.

Installation. System requirements

Bopup Communication Server

A server-side software that organizes, manages and controls all of private IM system

Server Requirements

- Microsoft Windows NT 4.0
- Microsoft Windows 2000
- Microsoft Windows XP
- Microsoft Windows 2003
- Microsoft Windows Vista
- Microsoft Windows 2008

Hardware Requirements

- 1 GHz processor or higher recommended
- 1 GB RAM
- 70 MB free disk space
- Active Directory (LDAP) catalog (optional)
- MS SQL Server 2000 or higher (can be installed with the server's installation package)
- Network connection configured for TCP/IP protocols
- Internet connection (optional)

Bopup Messenger

A client-side messenger sends and receives both personal, group messages and files safely

Client Requirements

- Microsoft Windows 98
- Microsoft Windows Me
- Microsoft Windows NT 4.0
- Microsoft Windows 2000
- Microsoft Windows XP
- Microsoft Windows 2003
- Microsoft Windows Vista
- Microsoft Windows 7

Hardware Requirements

- 200 MHz processor or higher recommended
- 128 MB RAM
- 3 MB free disk space
- Network connection configured for TCP/IP protocols
- Internet connection (optional)

Client messenger applications can be deployed via Active Directory Group Policies, MSI setup packages are provided. Installations can be distributed with the *setup.ini* configuration file that may include pre-installed settings. For more information, please proceed to www.blabsoft.com/downloads/

Bopup Observer

An one-way IM application just receives data, designed for alerting, urgent, emergency needs

Step-by-Step Guide to Setup Instant Messaging Workspace

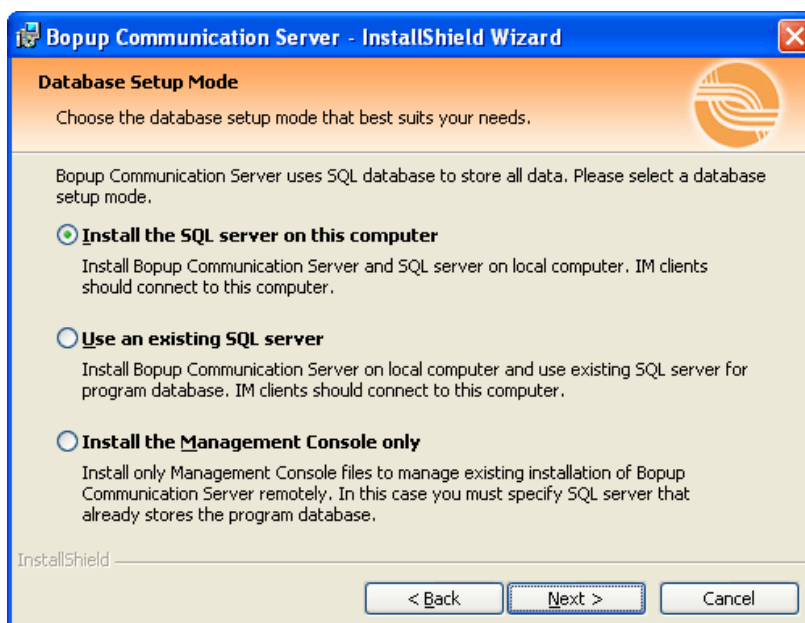
Installation. SQL Server setup

Bopup Communication Server requires Windows administrator rights to run the Setup Wizard and install the service. After installation the server can be run and managed under a non-administrator Windows account. Run the Setup Wizard to install Bopup Communication Server 3.x on a computer that will be used as an IM server.



The welcome page of the Bopup Communication Server Setup Wizard

During the installation process, the Setup Wizard asks you about the SQL database setup mode. The SQL Server is used to store the Bopup Communication Server data that includes user account information, user groups, message history, etc.

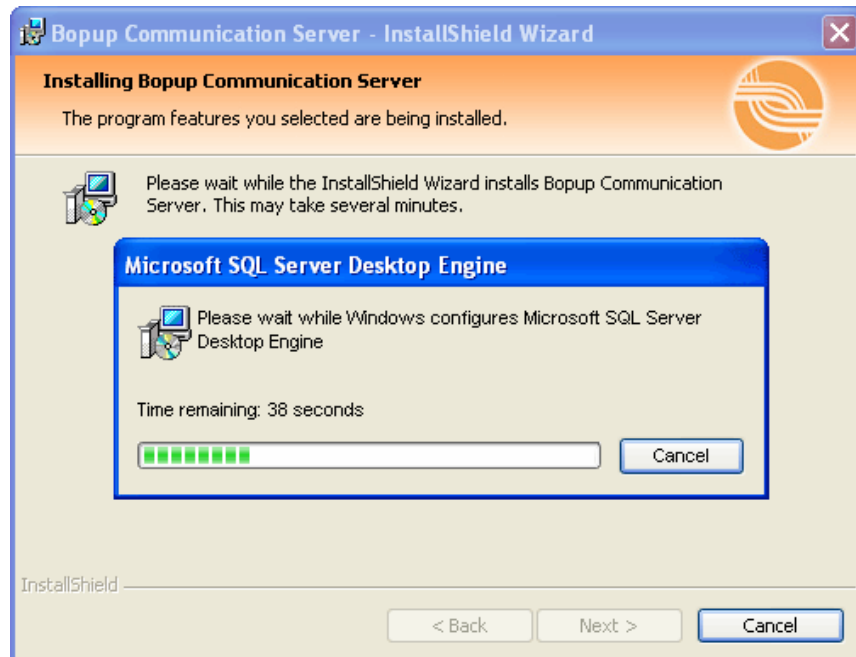


Select the SQL Server mode to set up a database

Step-by-Step Guide to Setup Instant Messaging Workspace

If the SQL server is already installed on a local or remote computer, it is recommended to use that SQL server. In that case you need to specify the name of the server, enter Login ID and Password to create a Bopup Communication Server database on the SQL server.

Otherwise choose the option to install the SQL Server locally. In that case the Setup Wizard installs MSDE 2000 (Microsoft SQL Server Desktop Engine) on the local computer.



Installing MSDE 2000 during the installation process

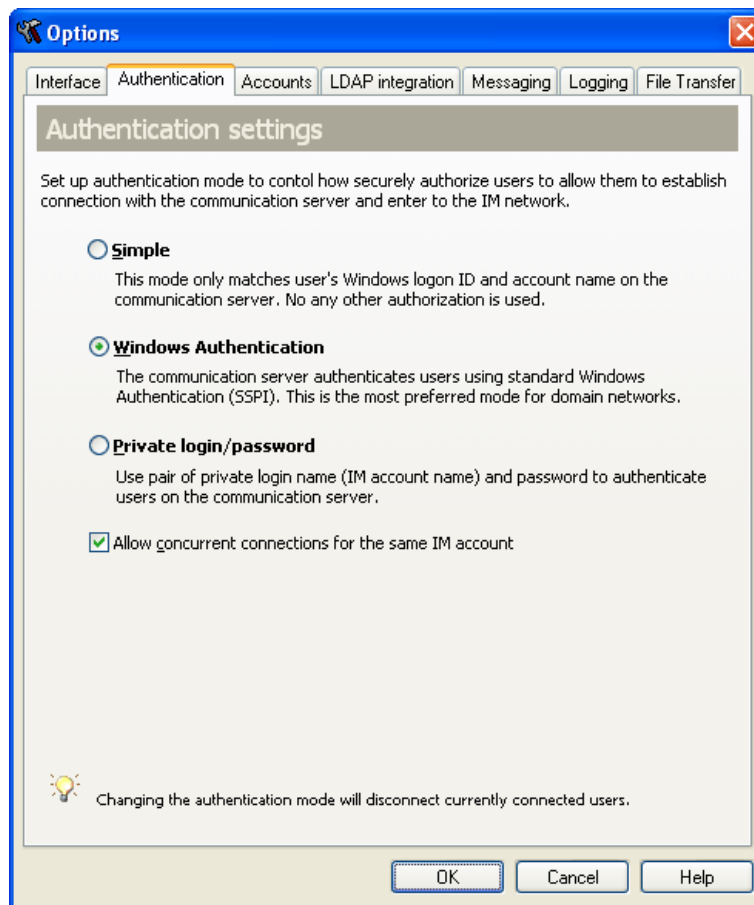
After the Setup Wizard finishes its work, Bopup Communication Server is ready to be used and it can accept messenger connections.

Setting up user accounts. Authentication mode

After you install Bopup Communication Server, you need to set up the options related to creating user accounts and authentication mode. Since each user should have his or her own IM account on the server to be able to connect to it, you should first specify the account creation options and/or create user accounts on the server. An IM account has the same name as the Windows login ID the user log on to a computer with.

Double-click the Management Console shortcut placed by the Setup Wizard on the Desktop (or run the shortcut from the Bopup Communication Folder in the Start menu). The console automatically opens the Startup Wizard on it's first startup to help you to manage and setup the general options. You can also find all the settings from the Options dialog box.

Step-by-Step Guide to Setup Instant Messaging Workspace



Specify the options related to user account management

There are 3 modes available to authenticate users on the IM server: Simple, Windows Authentication and Private login/password pair.

Simple mode only matches user's Windows logon ID and account name on the communication server. No any other authorization is used. For example, all users who logs to Windows with the Administrator name will establish the connection with the communication server with the same IM account name.

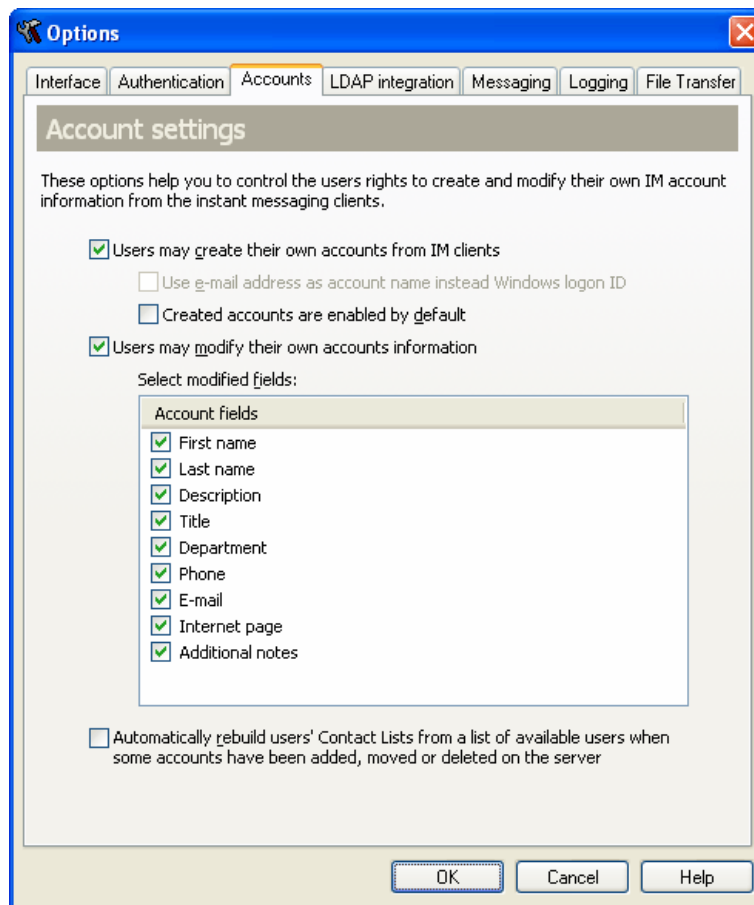
In the Windows Authentication mode the communication server authenticates users using standard Windows Authentication (SSPI). This is the most preferred mode for domain networks and it offers more security than the Simple mode.

Private login and password mode offers to use a pair of private login name (IM account name) and password to authenticate users on the communication server. Those login names and passwords are not based on Windows authentication credentials and can be chosen by users, for example, user's e-mail address and his desired secure password.

Setting up user accounts. Account options

There are 3 ways to create user accounts on Bopup Communication Server: import accounts from the Active Directory, create each account manually via the Add User Account Wizard or allow users to create their own accounts on the server from IM clients.

Step-by-Step Guide to Setup Instant Messaging Workspace



Specify the options related to user account management

The following topics describe each of these ways.

Setting up user accounts. Import from the Active Directory

It is easy to create user accounts if your network is based on the Windows Domain structure. You can import accounts from the Active Directory (LDAP) catalog with the help of the Active Directory Import Wizard. Just run the wizard from the Tools menu in the Management Console.

The wizard options allow you to create the same Organizational Units tree in Bopup Communication Server as you have in the Active Directory catalog. Organizational Units are described below in this document.

Setting up user accounts. Create via the Account Wizard

The Management Console includes tools for managing user accounts on the IM server. To create a new user account, run the Add User Account Wizard.

Setting up user accounts. Create from IM clients

You can permit users to create their own IM accounts from messengers in the server options (described above). When the options allow users to create accounts, the IM client automatically displays the Create My Account Wizard when establishing a connection and allows the user to enter his own account information, such as the first and last

Step-by-Step Guide to Setup Instant Messaging Workspace

names, title, department, contact details that are visible to other users. After the wizard finishes its work, the IM account is created on the server. When the option "Created accounts are enabled by default" is enabled, a new user automatically logs into the IM network.

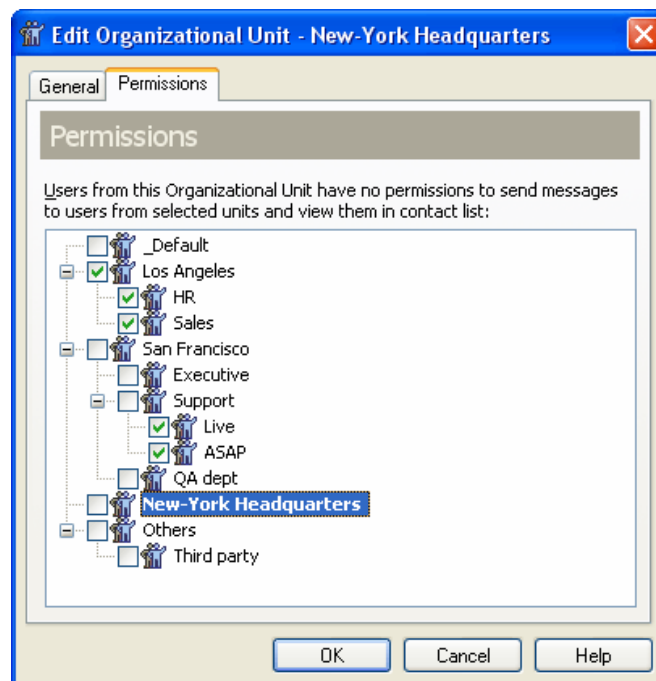
Use the "Use e-mail address as account name instead Windows logon ID" check box to enable email mode authentication. This mode permits users to enter their email addresses in the Create My Account Wizard in the messengers and use the e-mails as IM account names. Use this mode to avoid situations when several users have the same Windows logon name (for example, "Administrator") and you want to set up different IM account for each user.

Since anyone who connects to the IM server can create his own account and log into the instant messaging network, it is strongly recommended to make sure that your server is not public and no any external connections can be established. For security reasons, disable the "Users may create their own accounts from IM clients" option or use it when you install the instant messaging server on your office network and the server cannot be accessed from outside your LAN.

Otherwise you can disable the "Created accounts are enabled by default" option and users will not be able to log into the IM network until you enable their accounts on the server.

Managing the IM workspace. Organizational Units

Organizational Units constitute the primary way to manage the user's permissions to send messages, files and view other users available on the IM server. You can create the Organizational Units tree by any criteria according to your corporate infrastructure, such as office locations, departments, user roles or any other particular criteria.



Manage the Organizational Unit permissions that apply to all users from the unit

Manage each unit's permissions and place users for the best type. It is an easy and flexible way to control the list of users that is available to users from the same Organizational Unit.

You can easily move users and units from one Organizational Unit to another. When you move a user, you change his permissions to view other users in the contact list, send messages to them because the new unit's permissions

Step-by-Step Guide to Setup Instant Messaging Workspace

are applied to the user. This action also resets the user's Contact List stored on the server and the user receives the corresponding notification in the messaging client.

If you move an Organizational Unit, you change only your IM network structure visible in the Management Console and no changes are applied to users.

Managing the IM workspace. Messaging Groups

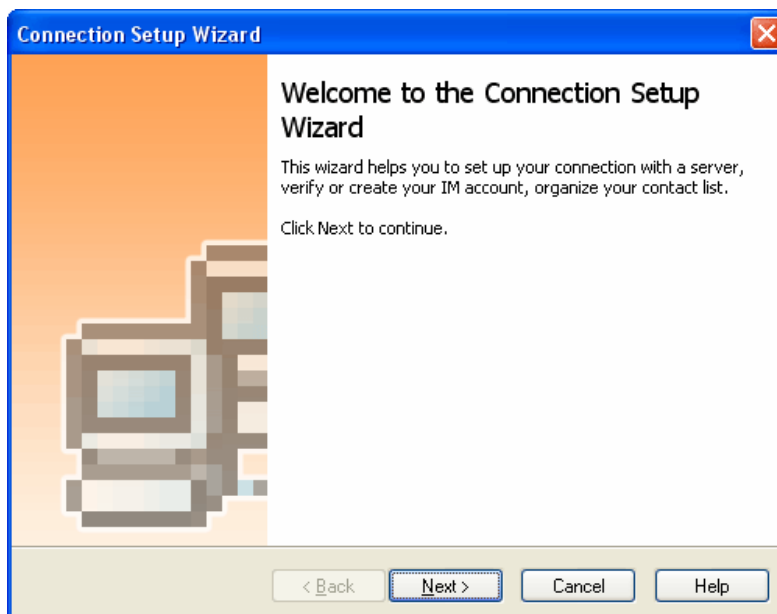
The centralized client/server architecture allows you to manage messaging groups from the IM server. Each user can be assigned to multiple messaging groups at the same time. A group is assigned to the user with the sending permission flag, which means that the user has the right to send messages and files to the group. The list of assigned messaging groups is visible in the messaging client, so the user can simply select a group and send a message or file to it.

Managing the IM workspace. News messages

The news messaging system is designed to create messages that should be automatically sent by the IM server at a certain time. It is easy to notify users and groups about any events that may occur, such as a file server restart, a discussion meeting, etc.

Getting IM clients connected. Set up a connection to the server

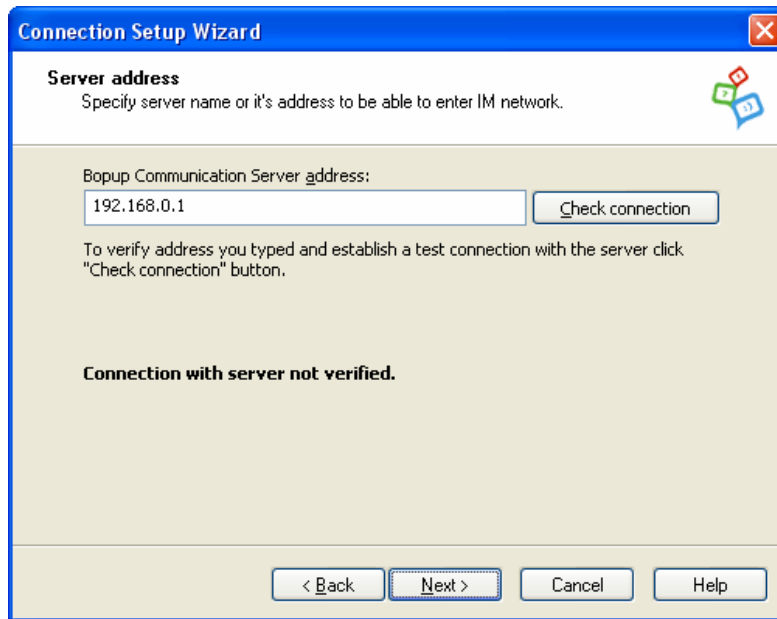
To log into the IM network and to be able to communicate with others, the user should specify the name of the computer where Bopup Communication Server is running. The messenger automatically displays the Connection Setup Wizard each time it is started and the IM server is not specified or no connection can be established.



The welcome page of the Connection Setup Wizard (the client-side software)

The name of the server can be a simple NetBIOS name (like a computer name) if the client connects from the same local area network, e.g. "imserver". If the connection is established via the Internet, the user should enter the IP address or DNS name of the server. To verify the specified name and establish a test connection to the IM server, click the "Check connection" button.

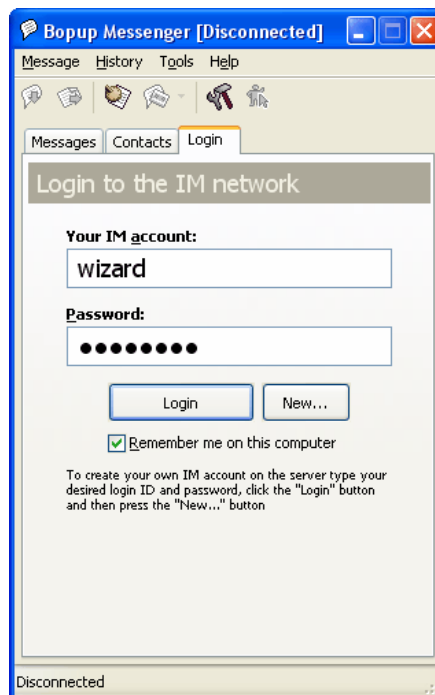
Step-by-Step Guide to Setup Instant Messaging Workspace



Specify the name of the IM server (the client-side software)

Getting IM clients connected. Sign up to the IM network

When the Windows Authentication mode is enabled on the communication server the IM clients use current user's Windows Login ID by default as an IM account name to authenticate user. If Windows Authentication fails or the Private login/password authentication mode is enabled, then "Login to the IM network" pane is shown in the instant messaging client to allow users to enter their own IM account name and password to sign in.



Sign up to IM network from Bopup Messenger client

Step-by-Step Guide to Setup Instant Messaging Workspace

Users can login to the IM network outside a domain network even the Windows Authentication mode is enabled on the server. For successful authentication they must enter their Windows Login ID including domain name, i.e. in the *DOMAIN\account* format. The messengers automatically resolve and deliver specified domain name on the server that gives users ability to authenticate to the communication server using Windows Authentication outside a domain LAN, for example, from home computers or other locations.

Additional information on server and client software comes with the product and can be found in product's help documentation.

About B Labs

Starting from 2000, B Labs deals with the development of software systems in the sphere of instant messaging and real-time communication. The aim of the company is to present efficient and innovative software solutions for the organization in terms of safe exchange of messages, data and documents transmitting between the users in local networks of small offices, companies of small and medium business as well as in large corporate and enterprise networks. Company success and more than 8-year-experience in this sphere is proved by the list of clients, which covers the companies from 35 countries of the world.

For more information please visit our website at www.blabsoft.com



B Labs, PO Box 3, Konakovo-1, Konakovo, Russia, 171251
General: info@blabsoft.com
Sales: sales@blabsoft.com
Phone: +1-877-99-BOPUP
www.blabsoft.com, www.bopup.com, www.bopup.es, www.bopup.ru